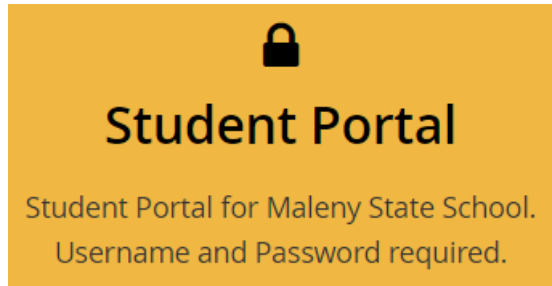
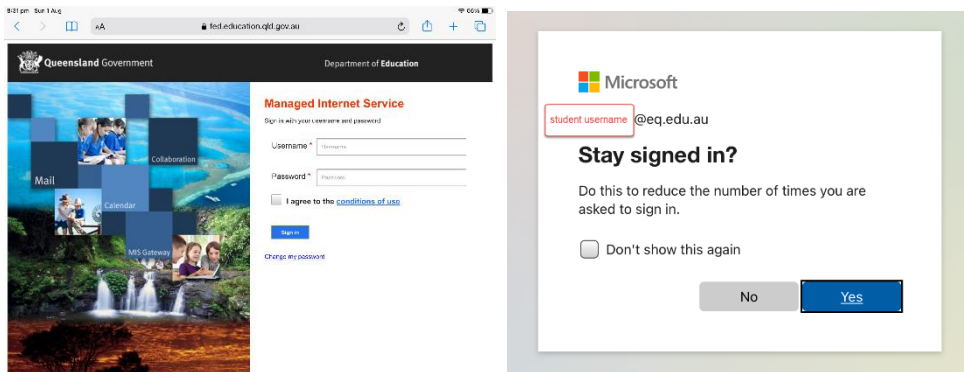


How to access the Maleny State School - Student Portal

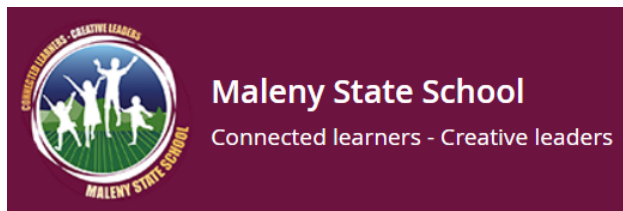
1. Go to <https://malenyss.eq.edu.au/>
2. Locate the Student Portal link on the Home Page. Click the Student Portal heading.



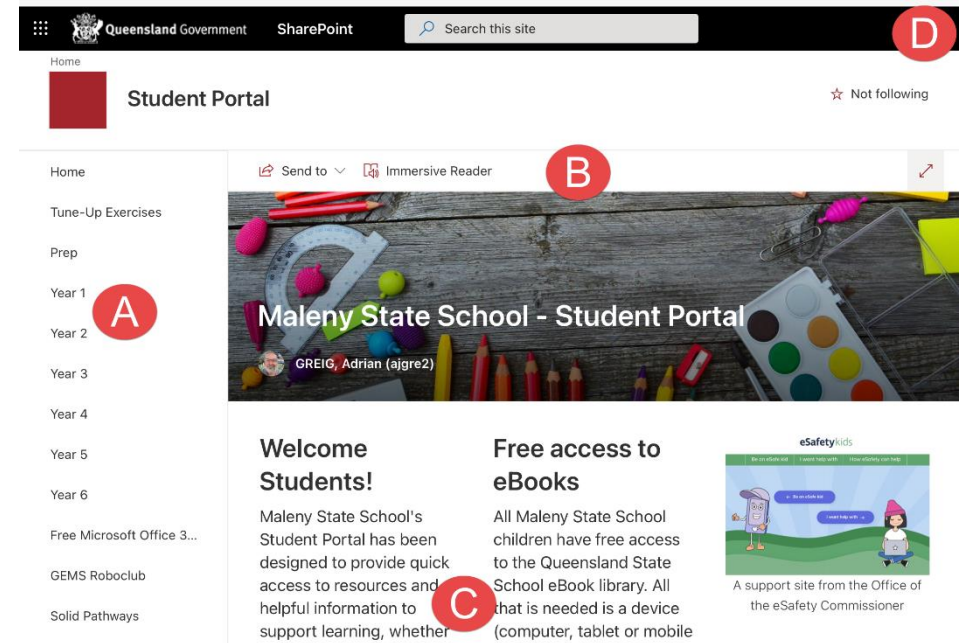
3. If prompted with the following login screen enter the student's school username (MIS-ID) and password. Tick the 'I agree to the conditions of use' check box. Then you will be prompted with a confirmation logon showing the student's email address. Click Yes.



4. The Student Portal home page will load.



Student Portal Home Page - The Basics



- A. The Portal Menu. Access year level pages from here. An FAQ section is at the bottom of the menu.
- B. The page header indicates which page of the portal you are on. It has Immersive Reader (on compatible browsers) to assist student reading.
- C. Scroll down to see page content. The home page has lots of useful links suitable for all year levels.
- D. User currently signed in is shown in the top bar on the right. If you have multiple students, use this icon to sign out. Some year level content (e.g. Class Notebooks) require the correct student to be signed in to be able to access their own class specific areas/content.