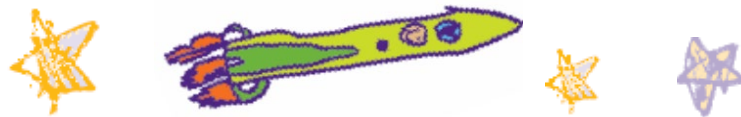


# Maleny State School

## ★ Prep Year ★



# 2024 Information Booklet





## Welcome

We extend a warm welcome to you as parents and carers of our Early Years children. We look forward to sharing many happy times with you as we work together to provide the best possible learning opportunities for your child/ren.

### ***Operating Hours***

School times are from 8:50 a.m. - 2:50 p.m. Students are expected to attend five full days per week to gain full benefit from the program.

### ***Early Years Curriculum***

Our Early Years learning environment provides exciting things to do, see, touch and experience. Your child will find friends to share with and teachers who respect them as capable and competent learners. Learning involves developing a relationship of trust. We aim to create a relaxed, secure and supportive environment where children are encouraged to investigate and explore their individual potential.

*We utilise the **Early Years curriculum guidelines** and will be implementing the National Curriculum learning areas of Maths, English, Science, Art, Humanities and Social Science, Technology and Health.*

*These incorporate the following:*

- ✧ supporting play as a context for learning
- ✧ understanding each child as an individual
- ✧ developing supportive partnerships
- ✧ providing flexible learning environments
- ✧ assisting children in exploring the world around them and the ways in which they learn.



*We provide learning situations incorporating five contexts for learning:*

- ★ routines and transitions
- ★ play
- ★ investigations
- ★ real-life experiences
- ★ focussed teaching and learning



### ***The Early Years Program at Maleny State School***

Everything your child does within our school has a purpose for learning. If you have any questions or concerns, please don't hesitate to ask us.

The following factors have been identified that contribute to success in learning:

- ★ social and emotional competence with a focus on social and personal learning
- ★ health and physical wellbeing, particularly in making healthy choices, gross-motor and fine-motor development
- ★ language learning and communication focusing on oral language and early literacy
- ★ early mathematical understandings with emphasis on early numeracy
- ★ active learning processes with a focus on thinking, investigating, imagining and responding
- ★ positive dispositions to learning.



## ***Digital Learning in Prep***

Our vision is to ensure all children are connected learners and creative leaders. To help achieve this, Maleny State School is implementing a rich digital learning environment after a successful trial, in Prep & Year 1. Utilising class iPad sets children will consume content, create content and collaborate with others, including peers, teachers. Parents will eventually see and engage with their child's learning from home through selected online apps.

A few of the apps that we utilise are:

- [Seesaw | Learning Platform](#)
- [Teach Your Monster: Free Phonics, Reading and Mathematics](#)
- [EPIC School: Popular, age-appropriate books for all kids](#)
- [Book Creator](#) App
- [Sora, By Overdrive](#) - connected to the Education Queensland Digital eBook Library

## ***Communication***

**Messages:** Please read the noticeboards daily to keep in touch with the children's activities, items of interest and generally, what's happening at school. Messages to and from school will travel in children's home folders. Each week you will receive our weekly note by email. The school may also send emails from time to time. Text messages are also sent when there are urgent or timely reminders.

**Class Newsletters:** Class newsletters are sent home at the beginning of each term.

**School Newsletters:** Our school newsletter is published fortnightly and uploaded to our Website: [www.malenyss.eq.edu.au](http://www.malenyss.eq.edu.au). Parents are sent an email containing the link when the Newsletter has been uploaded. The Newsletter informs you about learning in the classrooms and also about events happening in and around the school community.

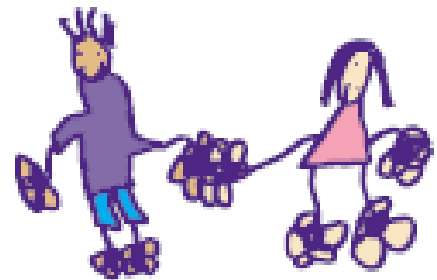
School Facebook Page: Join the Maleny State School Facebook Page to see regular posts, photos and updates about our school.

Sharing information: Events in family life, such as illness, new babies and visitors can be a prime source of excitement or concern for young children, and may affect their behaviour at home and/or at school. It is important for you to share information of this nature with your child's teacher.

Please feel free to discuss any problems or queries with your teacher that you may have about your child's progress, the school or the program. Please arrange a suitable time to meet with your child's teacher. We look forward to working with your child and yourself in building a supportive partnership.

### ***Parents at Prep***

As parent and carers, you play a vital role in the education of your children and therefore, we welcome you to become involved in our classroom.



You can help by:

<ul style="list-style-type: none"><li>✧ visiting the classroom and joining in the program (after children have settled in)</li><li>✧ offering to share hobbies, interests, ideas and any special expertise.</li><li>✧ joining our P&amp;C and attending parent information sessions.</li><li>✧ volunteering at the tuckshop.</li></ul>	<ul style="list-style-type: none"><li>✧ support our reading program by changing home reader and reading with children.</li><li>✧ preparing resources</li><li>✧ discussing any problems or concerns with the teachers.</li><li>✧ spending time with your child before school and taking an interest in their learning.</li></ul>
--	---

All Volunteers must complete the Mandatory Training Booklets before volunteering in the school.



Grandparents who wish to volunteer will also require a Blue Card.



## **School Routines**

### Before School

At Maleny State School, children who arrive before 8:30 a.m. must sit under the buildings at the school. At 8:30 a.m. a bell will ring and the children move to their classroom. School starts at 8:50 a.m. The classroom door opens at 8:30 a.m. allowing staff adequate time to prepare their room and attend any meetings that are scheduled before this time. If, on occasion, the door is still closed after 8:30 please wait outside until the door opens.

When the children come into the classroom, they are expected to be responsible for their own belongings. Please encourage your child to follow these routines in the morning:

- ★ Put bag in locker
- ★ Take out home folder
- ★ Participate in quiet table activities
- ★ Go to the toilet before the starting bell rings at 8:50 a.m.
- ★ Move to the carpet and wait for the teacher to start.



### Travel To and From School

It is recommended that children of this age be brought to and from the classroom by an adult, older sibling or responsible buddy.

School finishes at 2:50 p.m.

If you know that you are going to be late, please contact the school office and notify them of your delay. At these times, children will be supervised at the office and can be collected from there.

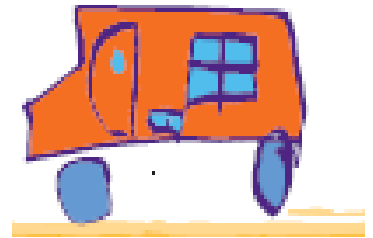
For the safety of your child, there are pedestrian crossings located outside the school grounds. Please ensure that you use the crossings and parking areas outside of the school grounds. Please remember not to park in the bus zones. For safety reasons, please don't walk through the staff car parks.

### Late arrivals and Early Departures

Children arriving late to school and leaving early MUST be signed in or out at the School Office. If you need to collect your child early, sign them out at the office and present the early departure slip to your child's teacher.

### Bus Travel

Students who are eligible under current transport guidelines (i.e. outside the Brisbane City Council boundaries) may make an application for travel assistance during the preparatory year. Staff collect Prep and Year 1 bus students from their classroom each afternoon and ensure they catch the bus safely.



### QParent

QParents is a user-friendly portal accessible via app or web browser, providing parents with secure online access to information about their child's state schooling.

QParents allows you to access and manage information online about your child. You can access information about attendance details, upcoming events, report cards, consent permissions for school events and invoices/ payment history.

Watch the [QParents overview video](https://youtu.be/RDOEufRCR-Q) <https://youtu.be/RDOEufRCR-Q>

For more information visit <https://malenyss.eq.edu.au/support-and-resources/qparents>

## Absences

When your child is absent, please notify the school absence line by phone (54998366) or email ([admin@malenyss.eq.edu.au](mailto:admin@malenyss.eq.edu.au)). Unexplained absences are recorded in the class roll and must be followed-up. As mentioned you can also log absences and their reasons via the QParent app.

## Illness

We advise you to keep your child at home if she/he is not well. Remember that a sick child is better at home with their parents rather than at school feeling unhappy and spreading germs to other children. **Any serious allergies and medical conditions need to be recorded at the school office.**

Children with Asthma will need to provide an Asthma Health Plan from their Doctor.



## Sun safety policy

The outdoor learning environment is perfect for children to explore their large muscle skills, e.g. running, climbing and hopping. It also promotes body strength, balance, coordination, and supports growth in thinking processes and social learning.

We are a Sun Safe School and the school rule is **NO HAT, NO PLAY**. All children should have their school hat to wear - wide brimmed hats (7 cm brim). All Preps receive a maroon school hat at our transition days.

**Children without hats remain undercover during play times.**



## Swimming

Students **must wear a sunsafe swim shirt** when participating in swimming lessons.



## Additional Information

### Treasures from home

Toys and trinkets from home very often become lost or broken at school, so it saves a lot of time and heartache if these are left at home.

Any toys that find their way to school will be cared for in the Teachers office until the end of the day. Staff cannot assume responsibility for any loss or breakage.



### Names and labels

As young children often do not recognise their own belongings, we cannot emphasise enough the need to **label absolutely everything** - school bags, shoes, lunch boxes, water bottles, hats, library bags, clothing, including underwear and socks. Each child should have a spare set of clothes in their bag every day in case they are needed.

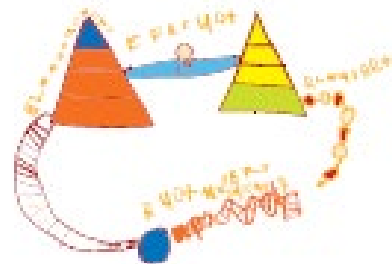
### What to wear

Students are required to wear the correct school uniform. The decision to wear school uniforms is a school community decision.

For further information refer to the School Parent Information Book

### Links within the school

Throughout the year, children will be involved in specialist lessons, Assembly, Sports Day, Cross Country, Under 8's Day, and other whole school events and celebrations.



## Tuckshop

Our tuckshop is now called the Mewar Café. Mewar is the Jinibara name for platypus. Download the myschoolconnect app to create an account.

<https://myschoolconnect.com.au>

The Mewar Café is open everyday. Orders are delivered to the Prep Eating area.

Please consider volunteering your time. It is a great way to meet new people and be involved in the school.

## Houses

Children will be allocated house teams.

These are as follows:

BARRUN (Gold)

KULUIN (Blue)

TIBROGARGAN (Green)

WARENGNA (Red)

For further information refer to the School Parent Information Book.



## Requirements

A healthy lunch and afternoon tea	A hat- 7cm brim Provided by School
Fruit break - fruit, veg or yoghurt only	A school bag big enough to fit all belongings (named)
A drink bottle - WATER ONLY	A Library Bag
A spare set of clothes	Items on the Prep Requirement List



## ***School term dates for Queensland 2024***

<b>Term 1</b>	Monday 22 January - Thursday 28 March	10 Weeks
<b>Term 2</b>	Monday 15 April - Friday 21 June	10 Weeks
<b>Term 3</b>	Monday 8 July - Friday 13 September	10 Weeks
<b>Term 4</b>	Tuesday 30 September - Friday 13 December	11 Weeks

We hope you will have an enjoyable and rewarding year with us. We also look forward to working closely with you to ensure the best possible start in education for your child.

The Early Years Teachers

