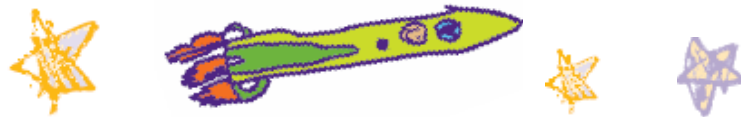


**Maleny State School**

**★ Early Years ★**



**2021 Information Booklet**





## Welcome

We extend a warm welcome to you as parents of our Early Years children. We look forward to sharing many happy times with you as we work together to provide the best possible learning opportunities for your child.

### ***Operating Hours***

School times are from 8:50 a.m. - 2:50 p.m. Students are expected to attend five full days per week to gain full benefit from the program.

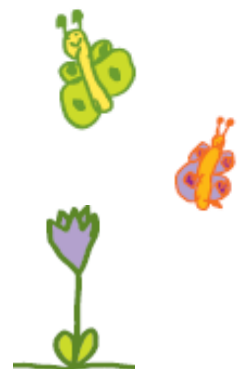
### ***Early Years Curriculum***

Our Early Years learning environment provides exciting things to do, see, touch and experience. Your child will find friends to share with and teachers who respect them as capable and competent learners. Learning involves developing a relationship of trust. We aim to create a relaxed, secure and supportive environment where children are encouraged to investigate and explore their individual potential.

*We utilise the **Early Years curriculum guidelines** and will be implementing the National Curriculum learning areas of Maths, English, Science, Art, Humanities and Social Science, Technology and Health.*

*These incorporate the following:*

- ✧ supporting play as a context for learning
- ✧ understanding each child as an individual
- ✧ developing supportive partnerships
- ✧ providing flexible learning environments
- ✧ assisting children in exploring the world around them and the ways in which they learn.



*We provide learning situations incorporating five contexts for learning:*

- ★ routines and transitions
- ★ play
- ★ investigations
- ★ real-life experiences
- ★ focussed teaching and learning



### ***The Early Years Program at Maleny State School***

Everything your child does within our school has a purpose for learning. If you have any questions or concerns, please don't hesitate to ask us.

The following factors have been identified that contribute to success in learning:

- ★ social and emotional competence with a focus on social and personal learning
- ★ health and physical wellbeing, particularly in making healthy choices, gross-motor and fine-motor development
- ★ language learning and communication focusing on oral language and early literacy
- ★ early mathematical understandings with emphasis on early numeracy
- ★ active learning processes with a focus on thinking, investigating, imagining and responding
- ★ positive dispositions to learning.



## Communication



Messages: Please read the noticeboards daily to keep in touch with the children's activities, items of interest and generally, what's happening at school. Messages to and from school will travel in children's home folders. Each week you will receive our weekly note by email.

Class Newsletters: Class newsletters are sent home at the beginning of each term.

School Newsletters: Our school newsletter is published fortnightly and uploaded to our Website: [www.malenyss.eq.edu.au](http://www.malenyss.eq.edu.au). Parents are sent an email containing the link when the Newsletter has been uploaded. The Newsletter informs you about learning in the classrooms and also about events happening in and around the school community.

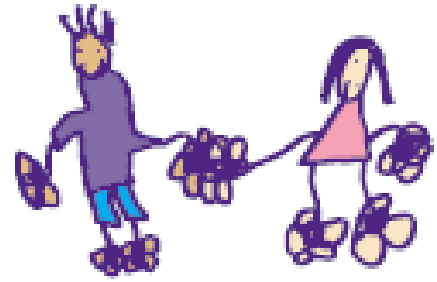
Sharing information: Events in family life, such as illness, new babies and visitors can be a prime source of excitement or concern for young children, and so affect their behaviour at home and/or at school. It is important for the home and school to share information that may affect children, and we would appreciate it if parents would inform us of any unusual happenings of this nature.

Please feel free to discuss any problems or queries with your teacher that you may have about your child's progress, the school or the program. Please arrange a suitable time to meet with your child's teacher. We look forward to working with your child and yourself in building a supportive partnership!



## Parents at Prep

As parents, you play a vital role in the education of your children and therefore, we welcome you to become involved in our classroom.



You can help by:

<ul style="list-style-type: none"><li>✧ visiting the classroom and joining in the program (after children have settled in)</li><li>✧ offering to share hobbies, interests, ideas and any special expertise.</li><li>✧ joining our P&amp;C and attending parent information sessions.</li><li>✧ volunteering at the tuckshop.</li></ul>	<ul style="list-style-type: none"><li>✧ support our reading program by changing home reader and reading with children.</li><li>✧ preparing resources</li><li>✧ discussing any problems or concerns with the teachers.</li><li>✧ spending time with your child before school and taking an interest in their learning.</li></ul>
--	---



# School Routines

## Before School

At Maleny State School, children who arrive before 8:30 a.m. must sit under the buildings at the school. At 8:30 a.m. a bell will ring and the children move to their classroom. School starts at 8:50 a.m. The classroom door opens at 8:30 a.m. allowing staff adequate time to prepare their room and attend any meetings that are scheduled before this time. If, on occasion, the door is still closed after 8:30 please wait outside until the door opens.

When the children come into the classroom, they are expected to be responsible for their own belongings. Please encourage your child to follow these routines in the morning:

- ★ Put bag in locker
- ★ Take out home folder
- ★ Sign in
- ★ Participate in quiet table activities
- ★ Go to the toilet before the starting bell rings at 8:50 a.m.
- ★ Move to the carpet and wait for the teacher to start.



## Travel To and From School

It is recommended that children of this age be brought to and from the classroom by an adult, older sibling or responsible buddy.



School finishes at 2:50 p.m. If you know that you are going to be late, please contact the school office and notify them of your delay. At these times, children will be supervised at the office and can be collected from there.

For the safety of your child, there are pedestrian crossings located outside the school grounds. Please ensure that you use the crossings and parking areas outside of the school grounds. Please remember not to park in the bus zones. For safety reasons, please don't walk through the car park.

### Late arrivals and Early Departures

Children arriving late to school and leaving early MUST be signed in or out at the School Office. If you need to collect your child early, sign them out at the office and present the early departure slip to your child's teacher.

### Bus Travel

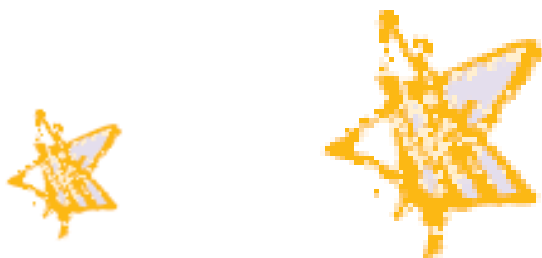
Students who are eligible under current transport guidelines (i.e. outside the Brisbane City Council boundaries) may make an application for travel assistance during the preparatory year. Staff collect Prep and Year 1 students of an afternoon from their classroom and ensure they catch the bus safely.



Children with disabilities will continue to receive transport assistance to the educational program recommended by the Principal Advisor Education Services, which may not be a special education program.

### Absences

When your child is absent, please notify the school absence line by phone (54998366) or email ([admin@malenyss.eq.edu.au](mailto:admin@malenyss.eq.edu.au)). Unexplained absences are recorded in the class roll and must be followed-up.



# Health Issues

## Illness

We advise you to keep your child at home if she/he is not well. Remember that a sick child is better at home with their parents rather than at school feeling unhappy and spreading germs to other children. **Any serious allergies and medical conditions need to be recorded at the school office.**

## Sun safety policy

The outdoor learning environment is perfect for children to explore their large muscle skills, e.g. running, climbing and hopping. It also promotes body strength, balance, coordination, and supports growth in thinking processes and social learning.

We are a Sun Safe School and the school rule is **NO HAT, NO PLAY**. All children should have their school hat to wear - wide brimmed hats (7 cm brim).

**Children without hats remain undercover during play times**



## Swimming

Students **must wear a sunsafe swim shirt** when participating in swimming lessons





## Additional Information



### Treasures from home

Toys and trinkets from home very often become lost or broken at school, so it saves a lot of time and heartache if these are left at home.

Any toys that find their way to school will be cared for in the Teachers office until the end of the day. Staff cannot assume responsibility for any loss or breakage.

### Names and labels

As young children often do not recognise their own belongings, we cannot emphasise enough the need to **label absolutely everything** - school bags, shoes, lunch boxes, water bottles, hats, library bags, clothing, including underwear and socks. Each child should have a spare set of clothes in their bag every day in case they are needed.

### What to wear

Students are required to wear the correct school uniform. The decision to wear school uniforms is a school community decision.

For further information refer to the School Parent Information Book

### Links within the school

Throughout the year, children will be involved in specialist lessons, perceptual motor programs, parade, Sports Day, Under 8's Day, and other whole school events.



### Tuckshop

Our tuckshop really needs your help. Please consider volunteering your time. It is a great way to meet new people and be involved in the school. Tuckshop can be ordered online through the Flexischool ordering system. <http://www.flexischools.com.au/>

## Houses

Children will be allocated house teams.

These are as follows:

BARRUN (Gold) an aboriginal word for boomerang

KULUIN (Blue) an aboriginal word for swan

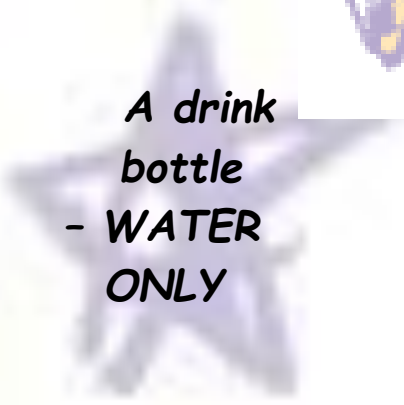
TIBROGARGAN (Green) an aboriginal word for flying squirrel

WARENGNA (Red) an aboriginal word for runner

For further information refer to the School Parent Information Book.



## Requirements



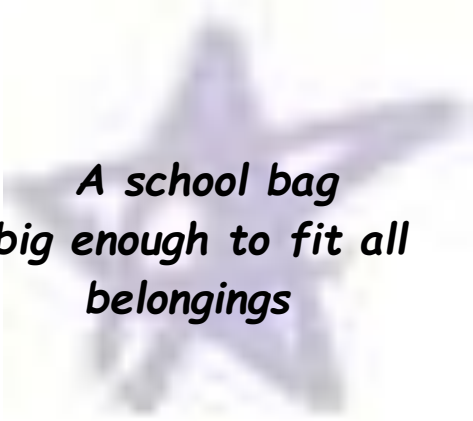
A drink  
bottle  
- WATER  
ONLY



A spare set  
of clothes  
in a plastic bag



A Library  
Bag



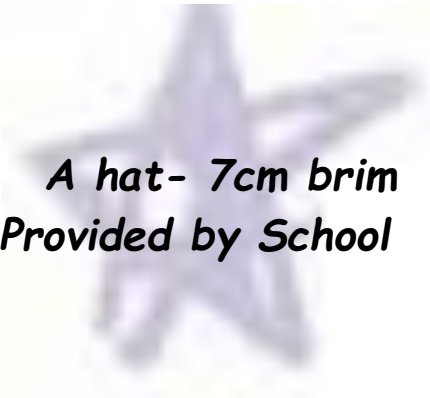
A school bag  
big enough to fit all  
belongings



A healthy  
lunch and  
afternoon  
tea



Items on  
the Prep  
Requirement  
List



A hat- 7cm brim  
Provided by School

## *School term dates for Queensland 2021*

<b>Term 1:</b>	Wednesday 27 January – Thursday 1 April	10 weeks
<b>Term 2:</b>	Monday 19 April – Friday 25 June	10 weeks
<b>Term 3:</b>	Monday 12 July – Friday 17 September	10 weeks
<b>Term 4:</b>	Tuesday 5 October – Friday 10 December	10 weeks

We hope you will have an enjoyable and rewarding year with us. We also look forward to working closely with you to ensure the best possible start in education for your child.

The Early Years Teachers

